

PRINCIPLE GALLERY
ALEXANDRIA

*Washington Society of Landscape Painters
Group Exhibition*

PRINCIPLE GALLERY

ALEXANDRIA

A Synopsis of the Society's History

The Washington Society of Landscape Painters is one of the oldest active art organizations in the greater Washington metropolitan area. Its origin can be traced back to 1913 when Charles Seaton and Winfield Scott Clime met one Sunday while painting on location. This chance meeting led to additional weekend painting excursions. They were joined over the next four years by several other artists who also had an intense interest in painting out of doors. Most of these artists were government employees who could only paint on weekends and holidays, but despite the time constraints they painted on location almost every week.

Today, the WSLP continues the tradition of painting outdoors en plein air with fellow members and guest artists, enjoying their camaraderie, and constructively critiquing each other's work. The Society also promotes the advancement of landscape painting through meetings, exhibitions, and field trips. The organization is now 112 years old. As in 1913, when the Society was founded as a loose-knit group of artists called the "RAMBLERS", painting on location continues to be the foundation on which its activities are based.

PRINCIPLE GALLERY
ALEXANDRIA

Featured Artists.

Trisha Adams • Jill Banks • Jill Basham • Jacalyn Beam •
Vicki Blum • Jean Brinton-Jaecks • Lani Browning •
Raymond Burns • Marietje Chamberlain • Hiu Lai Chong •
Bethanne Cople • Bernard Dellario • Christine Drewyer •
John Eiseman • Lynn Goldstein • Catherine Hillis •
Pattee Hipschen • Hai-Ou Hou • Harry Jaecks •
Brenda Will Kidera • Lynn Mehta • Crystal Moll •
Barbara Nuss • Sara Linda Poly • Mary Pritchard • Chris Rapa
• Edward Reed • Jean Schwartz • Nancy Tankersley •
Robert Thoren • Amy Waldrop •
Meg Walsh

PRINCIPLE GALLERY

ALEXANDRIA

Trisha Adams



Trisha Adams (b. 1956) didn't start painting until she was 44. It began innocently enough when she had an empty picture frame and decided to make something to fill it.

ARTIST STATEMENT

The paintings are representational with a dash of abstraction. My aim is not to render "objects," instead I record the pattern of colored shapes. When I step back, the shapes coalesce into things, people and places. It feels like magic.

The painting is not an exact copy of what I see, rather, it is my take on things. Just as a writer picks and chooses the details to include and the words with which to flavor or slant a story, I edit the content of the painting.



Fruit Stripes

PRINCIPLE GALLERY

ALEXANDRIA

Jill Banks



Jill Banks' (b. 1958) paintings focus on the joys of life. Jill got a late start to her artistic career, beginning with portrait and figure painting classes in 2003 – after spending 16 years running her own marketing communications company. Her now 20+ year art journey as a second career has proven to be the perfect choice. Jill's art has been featured in Modern Impressionist, American Art Collector, Southwest Art, Fine Art Connoisseur, Art of the West magazines and the Washington Post. When Banks is not out at a plein air festival or on a painting excursion

elsewhere, she can often be found at her studio in Great Falls Virginia. She is a signature member of the American Impressionist Society, American Women Artists, Women Artists of the West and juried member of the Washington Society of Landscape Artists.



Beauty Pageant

PRINCIPLE GALLERY

ALEXANDRIA

Jill Basham



Jill Basham's work is typically quiet, often with muted colors and purposefully simple design. She is dedicated to conveying the light, atmosphere, and "feeling" of the landscapes she paints, whether natural or manmade, and wants to evoke an emotional reaction.

Basham paints in her Maryland studio near the Chesapeake Bay, as

well as outdoors, in locations both far and near. She is comfortable allowing each painting and its subject to lead her on an exploratory, experimental journey, as this approach often yields the most unexpected and visually exciting results.



Into the Blue

PRINCIPLE GALLERY

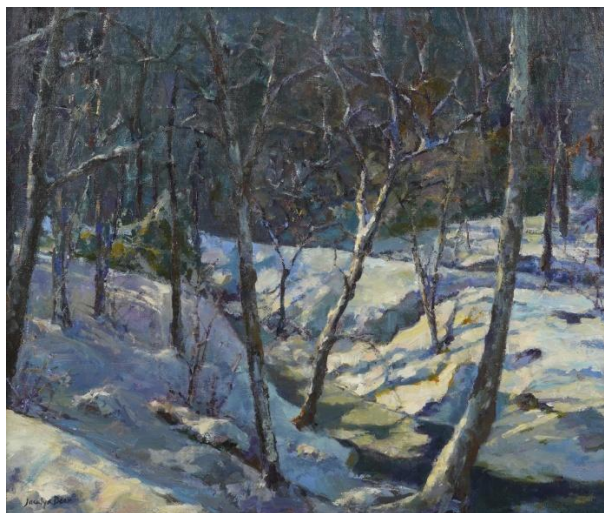
ALEXANDRIA

Jacalyn Beam



I was born and now reside in the picturesque Brandywine Valley where rolling hills, pastures, flowing water, and historical structures abound. I typically paint outdoors because the world is rich with beauty and it is the optimal way to see three dimensional objects, the subtleties of light and shadows, atmospheric perspective, and local color. Plein air painting is also a lot fun! You meet new friends - animal and human, have fleeting conversations with bicyclists and joggers, and experience the sounds and smells of the outdoors.
– Jacalyn Beam (b. 1954)

Jacalyn Beam's art education is rooted in the stories and beauty of the Brandywine Valley. Her paintings, particularly plein air landscapes, are widely recognized and collected for their historical and visual appeal. "Her rich palette and sensitive depictions of places are a winning combination that will reward lingering to appreciate the details" (Chamblis, Chester Co Press)



A Winter's Morning

PRINCIPLE GALLERY

ALEXANDRIA

Vicki Blum



Vicki Blum (b. 1964) is a contemporary fine artist from Virginia who enjoys expressing the vibrancy of her subjects through color. Vicki paints from life whenever possible, which is the best way to capture the rich colors of nature. "My paintings exaggerate these 'pure' colors to make each subject appear more alive." Vicki's oil paintings focus on florals, landscapes and portraiture. She paints what she finds beautiful, which is often flowers or a pastoral landscape. "I'm always looking for ways to saturate warm undertones and apply rich hues, but ultimately my objective is to have an intimate experience with whatever I'm painting." Vicki is a juried member of the Washington Society of Landscape Painters.



Altruist

PRINCIPLE GALLERY

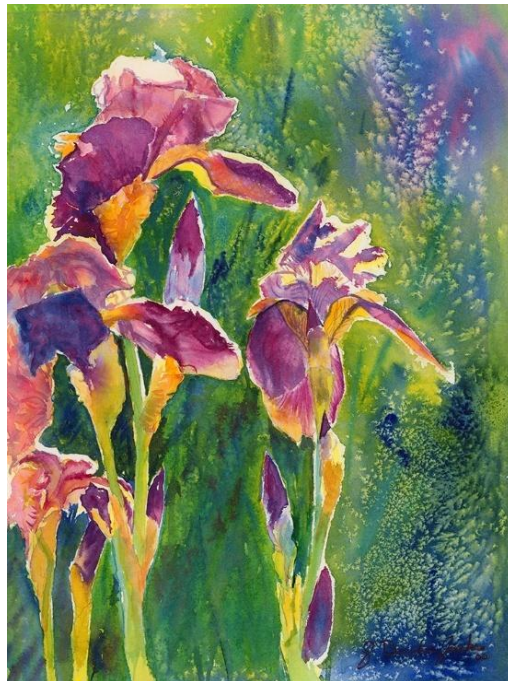
ALEXANDRIA

Jean Brinton-Jaecks



Iris and Mayflies by Jean Brinton-Jaecks (b. 1950) is from her series featured in her painted memoir, "Paint Like A Butterfly, An Artist's Pollinator Garden." Her memoir was inspired by the experience of witnessing the 1990 butterfly migration in Cape May, New Jersey, and later, tens of thousands of overwintering monarchs in Pacific Grove, California. This miracle of nature planted the seed that became Paint Like A Butterfly.

Jean is a visual artist working in watercolor, oil, and egg tempera on vellum with gold and silver leaf. After Jean's BFA from Maryland Institute College of Art, she was honored with MICA's Alfred and Trafford Klots International Artist Residency in Brittany. Her MFA thesis at George Washington University, "A Garden Near and Far," celebrated her garden.



Iris and Mayflies

PRINCIPLE GALLERY

ALEXANDRIA

Lani Browning



Lani Browning (b. 1952) is an award winning plein air oil painter for over twenty five years, is known for her distinctive skill with colors, and the quiet elegance and soft tonalism of her paintings. Her travels around the country and abroad, and her love of the land have contributed to her focus on the landscape. Her years of experience show in her confident and mature brushwork.

A juried Signature member of Oil Painters of America, Women Artists of the West, and the historic 112 year old Washington Society of Landscape Painters (where Lani serves as their archivist), a past juried artist of Plein Air Easton and other events, Lani's work was also published in Gary Pendleton's book "100 Plein Air Painters of the Mid - Atlantic".



Desert Sky

PRINCIPLE GALLERY

ALEXANDRIA

Raymond Burns



Washington DC area oil painter Raymond Burns (b. 1958) has been exploring active railyards, railroad museums, and abandoned railroad lines in search of “good rust” for the last few years. Inspiration for his latest series of works came when he stumbled upon an abandoned caboose in Union Bridge. Seeing a curved shadow cast by a rusty hand rail at the end of the caboose opened new possibilities for subject matter for the artist to explore.

Raymond’s recent series depicts railroad equipment, engines, cabooses, boxcars, and railroad structures in various states of use and decay. These paintings focus on details of the equipment alone and in the context of their environments. To the casual viewer the display of utilitarian machines may seem unattractive. Raymond hopes to elevate the subject matter to allow the viewer an opportunity to explore the arrangement of shapes, colors, light, and texture – to ultimately discover the beauty and character that exists within them.



Southern Boxcar

PRINCIPLE GALLERY

ALEXANDRIA

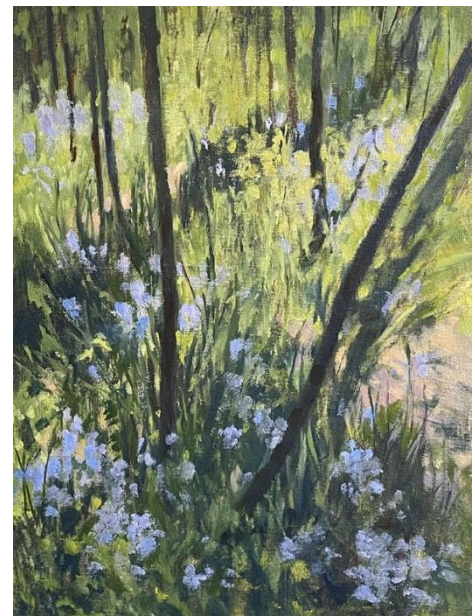
Marietje Chamberlain



Marietje Chamberlain (b. 1937) is a professional artist educated in the Netherlands, dedicated to painting landscapes in oil for the last 30 years. Her artistic focus centers on capturing the delicate effects of light, particularly during dawn and dusk, with a special emphasis on water reflections that reveal nature's serene moments.

Her large compositions represent the pinnacle of her artistic journey, drawing inspiration from extensive explorations along the Eastern seaboard of the United States and Europe. Working both "*en plein air*" and in her studio.

A graduate of the Academy of Fine and Commercial Arts in the Netherlands, Marietje has developed her craft through studio courses at the Art League School and American University. She was a participating artist at the Torpedo Factory Art Center and maintains membership in the Washington Society of Landscape Painters. Her achievements include painting the White House Calendar cover in 2001 and participating in numerous exhibitions, including a month-long residency in Dinan, France. Currently, she continues her artistic work from her studio in Washington, DC.



Blue Bell Waltz

PRINCIPLE GALLERY

ALEXANDRIA

Hiu Lai Chong



Hiu Lai Chong is an oil painter who uses vivid colors and sensitive brushstrokes to express mood and feeling in her paintings. She is inspired by the people she meets, the history and cultures she encounters, and the beauty of nature all around her. Her work often includes unique compositions with a refreshing variety of subject matter.

Her paintings have been collected by museums, featured in newspapers, magazine covers, and books. Hiu Lai is a signature member of Oil Painters of America, American Society of Marine Artists, Mid-Atlantic Plein Air Painters Association and artist member of California Art Club and Washington Society of Landscape Painters.



Winter Steam

PRINCIPLE GALLERY

ALEXANDRIA

Bethanne Kinsella Cople



Bethanne Kinsella Cople (b. 1961) resides in Old Town Alexandria, VA and East Hampton, NY. She teaches at the Art League of Alexandria and leads workshops in Maine and Provence France annually. She is the recipient of many awards in her 30 year career, and her works are in both private and public collections around the world. She is honored to have had her work in the movie "Vice" and on the television show "Necessary Roughness." She continues to enjoy expressing the awe she experiences when surrounded by the beauty of nature.

ARTIST STATEMENT

"Using expressive and abstracted brushwork to convey the nature of the scene, and relying on value and ambiguity of line to reveal the mystery of the landscape, I seek to evoke strong emotion from the viewer. Such ambiguity also invites personal interpretation and memories to emerge.

As in all my work, this painting is titled from the stanzas of favorite poems. The poem "The Echoing Green", by 18th century English poet William Blake, influenced my portrayal of the landscape. The relationship between painting and poem expresses a powerful response as I interpret nature."



On the Echoing Green

PRINCIPLE GALLERY

ALEXANDRIA

Bernard Dellario



Bernard Dellario (b. 1959) earned a bachelor's degree from Kings College in Wilkes-Barre, PA with emphasis on finance and art history. He studied Art at the Art League School in Alexandria, Virginia and attended several workshops with nationally known artists. He has been a member of the Washington Society of Landscape Painters since 2003. Fondly known as WSLP, one of the oldest active artist organizations in the Washington area, Bernard currently serves as President. He teaches painting classes through several venues, has won national awards and exhibits throughout the Maryland Eastern Shore and Washington area.



Red Dinghy

PRINCIPLE GALLERY

ALEXANDRIA

Christine Graefe Drewyer



Christine Graefe Drewyer (b. 1954) is most inspired by painting contemplative landscapes in oil which explore the many moods evoked by changing daylight on serene vistas, inspired by the 19th century Romantics and Tonalists, her color saturated compositions tend to emphasize the essence of the image, arousing the viewers Imagination and memory. Christine is a Master, Signature Member, and Immediate Past President of American Women Artists, A master Signature, Emeritus Member of Women Artists of the West, a Signature Member of National Oil and Acrylics Society. and a Selection Juror for the International Almenera Collection Art Competition 2023 & 2024.



Day Break

PRINCIPLE GALLERY

ALEXANDRIA

John Eiseman



John Eiseman (b. 1958) hails from the Eastern Shore of Maryland. His paintings are purely representational and narrative, but they are not about the pictorial. According to John, painting is not just the celebration of vision but, rather a quest for experience. It is the process of interpreting a fleeting muse. Change in life and in painting is always a process. John's work incorporates both studio and plein air activities. He considers himself to be an expressive realist relying on direct observation and alla prima painting techniques.

John graduated Magna Cum Laude from the Maryland Institute College of Art in 1981. John's work has been accepted into and awarded in many regional and national juried exhibitions - awards include many "best-in-show", "Best-in-category", "artist choice", purchase, and juror's choice. His paintings are honored to be in many private and public collections.



Grazeland

PRINCIPLE GALLERY

ALEXANDRIA

Lynn Goldstein



Northern Virginia artist Lynn Goldstein creates abstract paintings inspired by nature, particularly the hills, trees, and reflective waters that evoke her childhood in the mountains of southern West Virginia. Her work emphasizes a vibrant interplay of light, shadow, and intuitive color choices that bring imagined worlds to life.

“My process is rooted in exploring the passage of time and the beauty of imperfection. I’m drawn to textures—whether in weathered frescoes, crumbling walls, or nature itself—and strive to emulate these in my paintings. Using tools like trowels, scrapers, and sandpaper, I embrace unpredictability, allowing each piece to evolve organically and reveal its own story.” – Lynn Goldstein



Intractable Wildness

PRINCIPLE GALLERY

ALEXANDRIA

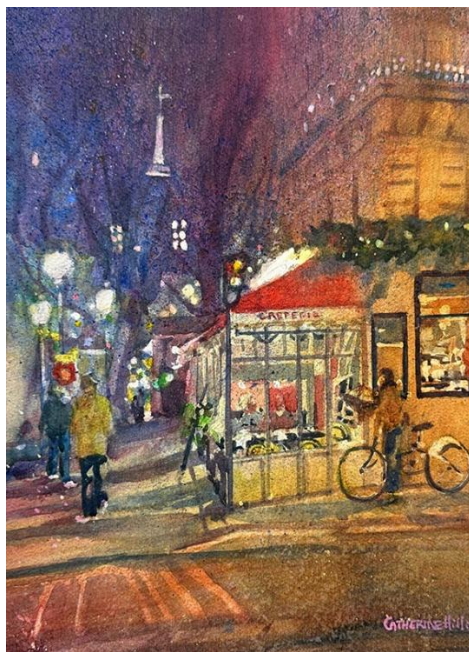
Catherine Hillis



Catherine Hillis (b. 1953) is a Virginia-based watercolor artist working in both studio and en plein air. Her light-filled works are described as traditional landscapes, still lifes, and figures, drawing the viewer into her unique observational sphere with humor or beauty in unexpected places.

Her work has been featured in many publications, including *Watercolor Artist*, *PleinAir Magazine*, *Fine Art Connoisseur*, *American Watercolor Weekly*, and the *Splash!* books. She has achieved artist residencies in the United States and Europe.

Catherine holds a B.F.A. degree from the University of Georgia and has done postgraduate work at the University of Texas. Her work is included in several permanent museum collections and is represented by fine art galleries throughout the United States.



Early Evening in Paris

PRINCIPLE GALLERY

ALEXANDRIA

Pattee Hipschen

Pattee Hipschen has been painting for over 30 years and has been exhibiting professionally since 2005. Her paintings, which range from miniatures to life-sized murals, are painted in oil with a distinctive style of bright and intense color. Pattee has exhibited in a variety of local and national venues and her work can be found in international private and corporate collections. Pattee is represented by several galleries in the DC area and on the Eastern Shore.



Pattee was born into a military family, traveling throughout the US and Africa until settling in Northern Virginia in 1975. She received degrees in Studio Fine Arts and Art History from GMU and teaches landscape painting and printmaking at the Arts Club of Washington and through the Art League School in Alexandria, Virginia. She is a member of the Washington Society of Landscape Painters, the Washington Project for the Arts, and the Alexandria and Arlington Artists Alliances. She has a studio in Arlington, Virginia where she lives with her husband, Thomas.



Trezmalaouen Beach

PRINCIPLE GALLERY

ALEXANDRIA

Hai-Ou Hou



Hai-Ou Hou (b. 1967) was born in Beijing where she received her B.F.A. from the Central Institute of Fine Art and Design. She earned her M.F.A. from Towson State University. She taught at the Hubei Fine Art Institute, China.

Hai-Ou is a Signature Member of the American Impressionist Society, the California Art Club, and the Mid-Atlantic Plein Air Association. She is also a member of the the Portrait Society of America and the Washington Society of Landscape Painters.

Her work is widely represented in commercial galleries and is included in many public and private collections throughout the U.S. and abroad. She has received numerous awards and honors through participation in art events and exhibitions.



Red Fish

PRINCIPLE GALLERY

ALEXANDRIA

Harry Jaecks



Harry Lloyd Jaecks (b. 1953) studied drawing and printmaking at the Maryland Institute of Art. He continued his studies with private instruction in oil and watercolor. He was mentored in drawing by David Scott, nephew and student of N.C. Wyeth.

H.L. Jaecks produces figure studies, landscapes, and portraits in oil, egg tempera, watercolor, and graphite. His work is focused on the people and places of Southern California, the New England coast, his native Chesapeake, and rural Piedmont.



Annisquam

PRINCIPLE GALLERY

ALEXANDRIA

Brenda Will Kidera



Brenda Kidera (b. 1959) is a native of Maryland, is an accomplished artist whose work is deeply rooted in an appreciation for the natural world. Her realistic paintings compel viewers to engage with the subtle technical details that reveal the extraordinary within the ordinary. Kidera's artistic strength lies in her ability to translate the beauty of her surroundings into paintings that evoke an emotional response, urging the viewer to reflect on the beauty that exists in their own environment.

Now a juried member of several esteemed art organizations and a mentor with over 30 years of teaching experience, Kidera has showcased her art across the United States, capturing the attention of collectors and critics alike.



Reflections & Ripples

PRINCIPLE GALLERY

ALEXANDRIA

Lynn Mehta



Lynn Mehta (b. 1963) is known for her fluid and expressive oil paintings, Lynn Mehta captures the essence of her subjects through a rich interplay of color and texture. Inspired by the world around her, she finds beauty in both the ordinary and extraordinary, drawing on elements such as weathered farm buildings, old boats, vibrant flowers, and natural landscapes to create visual stories.

A Virginia-based artist, Lynn grew up along the Pacific Ocean in California, where her passion for painting began. Encouraged by her mother, an artist herself, Lynn pursued her talents early, eventually earning an art degree from San Diego State University. Her love of the outdoors and travel, shaped by childhood experiences on the beach, backpacking trips, and living in India, continues to inspire her work.



Where Sky Meets Shore

PRINCIPLE GALLERY

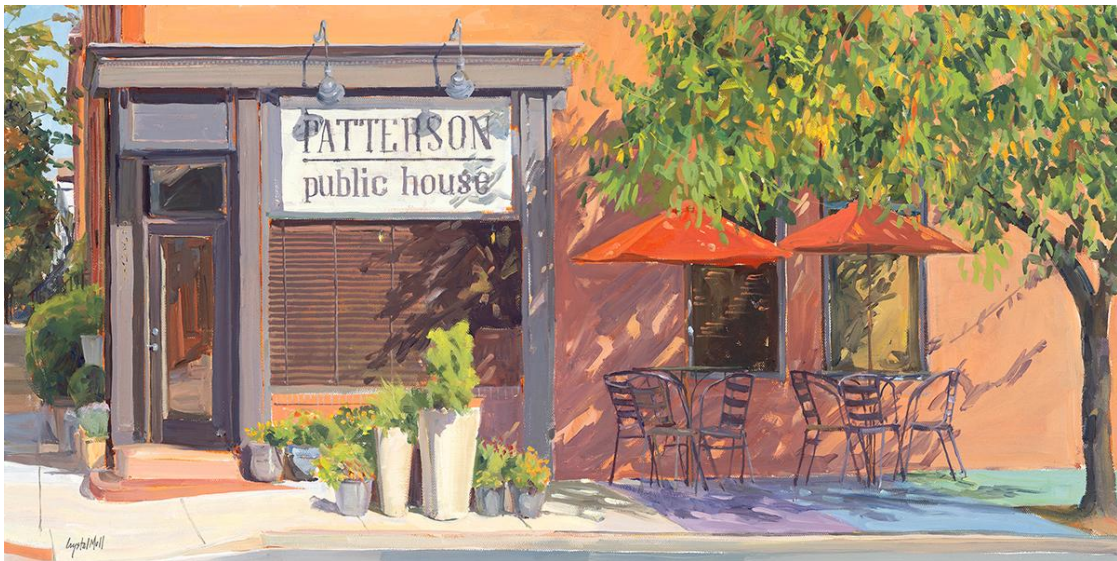
ALEXANDRIA

Crystal Moll



Crystal Moll is a dedicated plein air painter. Originally from Virginia Beach, she obtained her BFA from Moore College of Art & Design and made Baltimore her home in the late 1980s. Since then, she has focused on painting on location, capturing urban landscapes directly from life. While some pieces can be completed in a single session, most require multiple visits over days or even weeks, with some works finished in the following season. Crystal is particularly drawn to color, especially how it

interacts with light, exploring the way colors respond when warmed by sunlight or cooled by shadows. Due to her 'slow' meticulous process, she participates in only a few plein air events each year, choosing to work at her own pace.



Patterson Public House

PRINCIPLE GALLERY

ALEXANDRIA

Barbara Nuss



Barbara Nuss (b. 1939) began her artistic career with a BFA from Syracuse University followed by study at the Schuler School of Fine Art in Baltimore. She worked as an illustrator and graphic designer for many years, to which she credits valuable experience on her artistic journey.

Working with numerous art directors, copying at the National Gallery of Art, and training at Schuler's gave her the necessary tools to be a professional representational artist, which she has been for the last forty-three years. She has been teaching oil painting in both a studio environment and plein air workshops since 1983.

Her work has been juried into many national exhibitions including Oil Painters of America, International Guild of Realism (Best Landscape Award in 2019), Women Artists of the West (Best Landscape Award in 2017), National Oil & Acrylic Painters Society (Best Landscape Award in 2010), National Arts for the Parks, and State Department Arts in Embassies Program. Barbara considers her book, "Secrets to Composition," one of her most significant achievements.



October Sunrise

PRINCIPLE GALLERY

ALEXANDRIA

Sara Linda Poly



Sara Linda Poly (b. 1945) is known for painting dramatic light in the skies and in the landscape. She grew up near Philadelphia and started artwork as a child, always studying the sky and nature. Originally focused on illustration, design and portraiture, she also worked as a gallery director before moving to painting full time in the studio, and on location. She has been the winner of numerous awards and a

participant in many regional and national shows. She has traveled, lived and taught around the US, Europe and Mexico.



A New Day

PRINCIPLE GALLERY

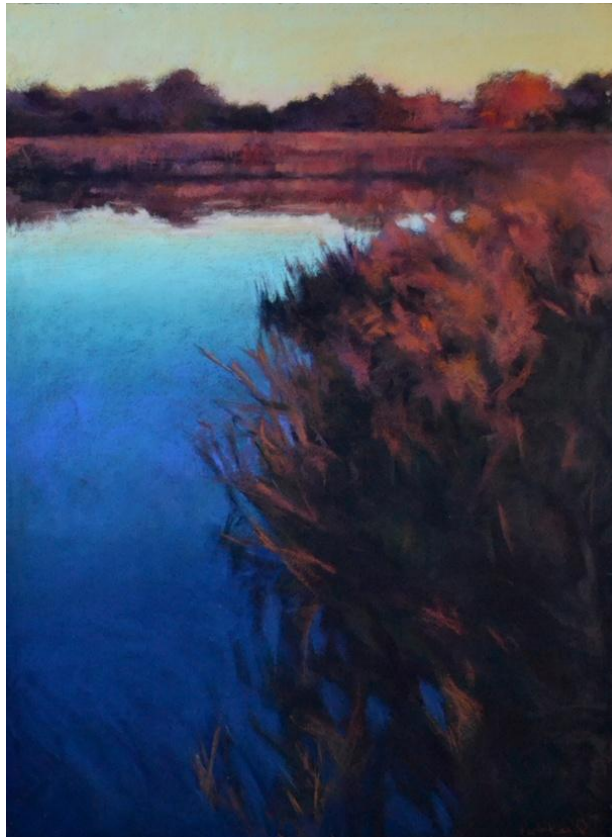
ALEXANDRIA

Mary Pritchard



Mary Pritchard (b. 1945) received her B.A. in studio art from Mount Holyoke College and has Master's degrees in both art and journalism. She was an art curator and consultant to several major corporations advising on the acquisition, installation, and conservation of art. She coordinated special events and exhibitions for

artists including internationally known landscape painter Wolf Kahn. In her studio in historic Chestertown, Maryland, she works in oil, acrylic, and gouache, but pastel is her preferred medium. She is known for her landscapes of Maryland's Eastern Shore, as well as coastal Maine and rural Nova Scotia.



Lemonade Sky

PRINCIPLE GALLERY

ALEXANDRIA

Chris Rapa



Chris Rapa (b. 1964) is an American painter, living in Catonsville, Maryland. Her contemporary Impressionist work ranges from conventional still life and landscape to interior spaces washed in natural light, to collage and mixed media pieces that articulate a theme. Recent paintings combine oil, cold wax, and collage elements, and give voice to Chris' feminist values through vignettes of shared societal experiences. Whether capturing a moment in plein air, the simplicity of fruit and flowers, or stitching together the poetry and literary quotations in response to current events, Chris strives to make visually appealing work that engages the viewer, and opens a dialogue of meaningful exchanges.

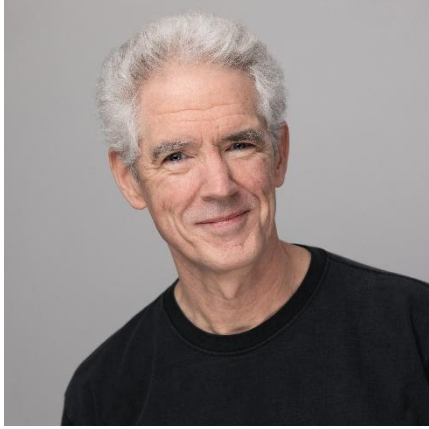


Built to Last

PRINCIPLE GALLERY

ALEXANDRIA

Ted Reed



Ted Reed (b. 1964) lives in Vienna, Virginia. He paints portraits, figures, wildlife, still-life, and both plein-air and studio landscape artworks, principally in oils, but he also works in pastels, most drawing mediums and mixed media. He has taught thousands of students at the Art League School in Alexandria, Virginia, is one of the original signature-status artists of the Portrait Society of America, has juried numerous art exhibitions, and

has won national and international awards for both his artwork and his contributions to art instruction.



Guardians of the Path

PRINCIPLE GALLERY

ALEXANDRIA

Jean Schwartz



Jean Schwartz (b. 1946) was born and raised in northern New Jersey a short distance from NYC. She graduated from Upsala College in 1968 with a BA degree and a major in Fine Arts. After graduating she spent a year in Paris painting and studying art history and drawing. Returning home she moved to upstate NY where she continued to paint and exhibit large, abstract paintings before moving to VA. In the 1980's she changed course and studied landscape design at GWU. She established her own landscape design business but closed it in 1998 to become a full-time landscape painter.

Jean's paintings are in private and corporate collections here and in France. She is a juried member of several national art organizations and is a juried artist member of the historic Salmagundi Arts Club in NYC. She currently resides in McLean VA.



Emergence

PRINCIPLE GALLERY

ALEXANDRIA

Nancy Tankersley



Nancy Tankersley began her career as a portraitist but entered the gallery scene with figurative paintings of people at work and at leisure. Now active in the current plein air movement, and a founder of Plein Air Easton, she travels worldwide participating in competitions, judging, and teaching.

In 2018, 2019, and 2020 she was invited to be an instructor and demonstrator at the Plein Air Convention in Santa Fe and released two instructional videos with Lilliedahl Videos (now Paint Tube TV). In 2016 and 2017 she was invited to exhibit at the prestigious Masters Exhibition at the Salmagundi Club in NYC. In 2019 she was selected to be the Featured Artist at the 49th Waterfowl Festival in Easton, Maryland.

Tankersley moves between landscape, figures and still life. Incorporating non-traditional tools, supports and technologies for her paintings she remains faithful to her impressionistic style.



Lost in Time

PRINCIPLE GALLERY

ALEXANDRIA

Robert Thoren



Robert Thoren (b. 1943) has relished the opportunity to paint the Northern Virginia landscape. Before moving to Virginia in 1993, Robert studied in Los Angeles with teachers closely associated with the late Russian emigre impressionist Sergei Bongart. Robert paints in a sensual, impressionistic style emphasizing vivid color and the employ of dramatic brushstrokes. His artistic goal is to suggest spontaneity while maintaining a firm mastery of drawing and painting techniques. In his many still lifes, Robert celebrates

the Bongart school's focus on color and its ability to transform everyday objects into scenes of powerful emotion.

Robert teaches oil/acrylic landscape and still life workshops, He is also an award-winning participant in numerous juried Plein Air competitions throughout the country. He is an active member of both the Washington Society of Landscape Painters and NOVA Plein Air Artists.



Corner Deli

PRINCIPLE GALLERY

ALEXANDRIA

Amy Waldrop



Amy Waldrop (b. 1967) is a self-taught American Impressionist painter, currently living in Clifton, Virginia. She views life as art, in all of its joys and sorrows. Amy is drawn toward nature and enjoys painting in the woods as often as possible. Whether painting plein air or in-studio – landscapes, flowers, or portraits - she paints from an intangible pull that takes her into a meditative space where art is born. She is committed to painting feelings rather than objects, believing each of her paintings holds a poetic essence that invariably finds its way to the right audience, at the right time.



The Watering Hole

PRINCIPLE GALLERY

ALEXANDRIA

Meg Walsh



Meg Walsh (b. 1956) is known for paintings drenched in light and color. She welcomes viewers into her landscapes, capturing serene moments that often pass unnoticed. Though realistic in nature, her work has a strong abstract element, characterized by simplified shapes, limited values, and glowing color.

Walsh earned a place in the book *100 Plein Air Painters of the Mid-Atlantic* as well as numerous awards at juried exhibitions and plein air competitions. Her work is featured in museums and private collections, and she is represented by galleries in Delaware, Maryland, and Virginia.

Walsh teaches oil painting at the Academy Art Museum in her hometown of Easton, Maryland.



Sand and Sun